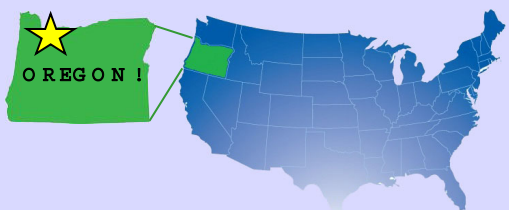




# PORTLAND ENGLISH LANGUAGE ACADEMY



Portland, Oregon USA



[www.PortlandEnglish.edu](http://www.PortlandEnglish.edu)



# WHY PORTLAND?



*People in Portland are very nice and open-minded. It was easy to go out and meet new people. I enjoyed trying new ethnic restaurants and playing pool and other games at bars. Every week I could go to a music concert. It was so affordable!*

—Tiziana, Switzerland

## Big-city fun & small-town friendliness

It costs less to live, play and study in Portland, because

***Oregon has no sales tax!***

Compare Portland to other cities at [www.numbeo.com](http://www.numbeo.com)

## AMAZING FOOD & DRINKS



over 100 breweries & 30 wineries

over 500 unique Food Carts



Culture Festivals & Street Markets

## UNIQUE FESTIVALS & EVENTS



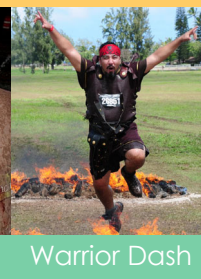
Sand Castle Contest



Naked Bike Ride



Zombie Walk



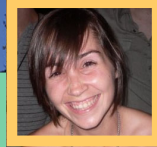
Warrior Dash



Christmas Festival of Light



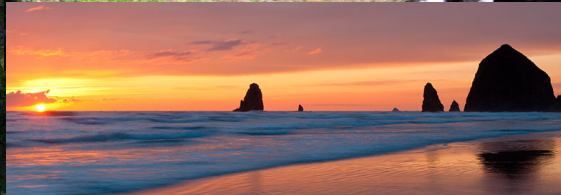
# WHY OREGON?



*When I was in Oregon I did a lot of hikes in many different and beautiful places! I enjoyed getting to know Portlanders, too. Because of where Portland is located, it was easy to take trips to other cities on the West Coast, as well as the Olympic Peninsula, Multnomah Falls, and Crater Lake.*

—Judith, Spain

## OUTDOOR ADVENTURES



## A variety of natural wonders

Oregon has the most diverse climate of any state in the U.S. Enjoy hiking, camping, cycling, or rafting as you explore a region of amazing nature!







# PORTLAND ENGLISH LANGUAGE ACADEMY

## Study better, pay less

**5% tuition discount** if you pay for **2 terms** at one time

**10% tuition discount** if you pay for **3 terms** at one time

## PELA OFFERS MORE

- **Small class sizes**  
(8 to 15 students)
- **6 levels of classes**,  
"beginner" to "advanced"
- **College & test preparation**
- **4-week terms** every month
- **F-1 & non F-1** programs



### CAMPUS AMENITIES

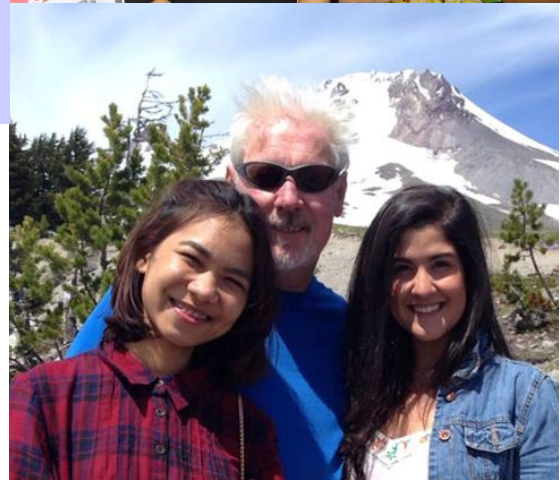
- **Free tutoring sessions** with teachers
- **Conversation groups** every day
- Study Lab
- Private Study Rooms
- Free Wi-Fi
- Free Parking
- Student Lounge & Kitchenette

### HOMESTAY OPTION

*Live with a real American family*

- Private bedroom
- Breakfast and dinner every day
- Enjoy family activities and culture

NOTE: Some homestays host more than one student





# A VARIETY OF SCHOOL ACTIVITIES

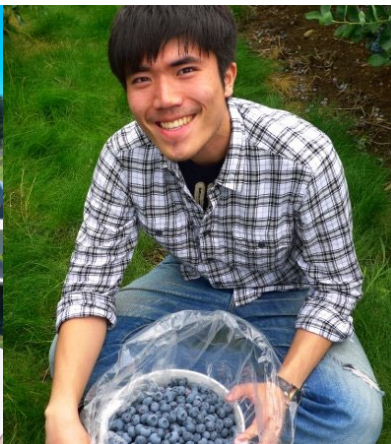
## Discover more of Portland every week!

Every week, PELA invites students to join in social activities and events at various locations around Portland. Join us for happy hours at great restaurants, lunches at amazing food carts, tours of museums, and explorations of unique neighborhoods!

Visit us on *Instagram* to see photos from *past PELA Activities*!



<https://www.instagram.com/pelaenglish/>



## COLLEGE PARTNERS & CONDITIONAL ADMISSIONS



### WHAT IS "CONDITIONAL ADMISSIONS?"

**Conditional Admissions** to a university means you can enter that university with a lower TOEFL or IELTS score.

Some schools don't require a TOEFL or IELTS score for PELA students!

Each university may have different requirements for conditional admissions. Requirements usually include:

- Finish PELA's highest level (**Level 6**) with a grade of B (**3.0 / 80%**).
- **Undergraduate Programs:**  
TOEFL Score: 60  
IELTS Score: 5.0  
No SAT, GRE or GMAT needed
- **Graduate Programs:**  
TOEFL Score: 65  
IELTS Score: 5.5  
Pass GRE/GMAT by end of first year

# FULL-TIME ENGLISH PROGRAM

## INTENSIVE ENGLISH

up to 30 hours per week

- 20 hours of Required English Classes
- 10 hours of Optional English Classes, Conversation Groups & Tutoring
- 4+ hours of Optional Social Activities



Day Of Week	Focused English Skills Classes 9:00-10:50AM		Communication Skills Classes 11:00AM-12:50PM	Optional Classes & Activities 1:30PM-3:20PM
MONDAY	Listening & Speaking	Writing & Grammar	Integrated Communication Skills	Choose between: - Academic English - Conversation Group - Tutoring
TUESDAY	Reading, Vocabulary, & Pronunciation		Grammar for Communication	Choose between: - IELTS Test Preparation - Conversation Group - Tutoring
WEDNESDAY	Listening & Speaking	Writing & Grammar	Integrated Communication Skills	Choose between: - Academic English - Conversation Group - Tutoring
THURSDAY	Reading, Vocabulary, & Pronunciation		Grammar for Communication	Choose between: - IELTS Test Preparation - Conversation Group - Tutoring
FRIDAY	Listening & Speaking	Writing & Grammar	Integrated Communication Skills	Choose between: - Conversation Group - School Social Activity

2 Social Activities each week (the activity and schedule varies each week)

### CLASS THAT FIT YOUR ABILITIES!

Students are placed in different class levels **according to their ability in each skill.**

EXAMPLE: You can have a **Level 5 Reading** class and a **Level 4 Speaking** class.

### HOW FAST CAN YOU IMPROVE?

Students usually spend **2-3 months** at each class level.

Advance faster by taking a **"Level-Up" Test** at the end of each term.



# PART-TIME ENGLISH PROGRAM

## SEMI-INTENSIVE ENGLISH

*up to 27 hours per week*

- 17 hours of Required English Classes
- 10 hours of Optional English Classes, Conversation Groups & Tutoring
- 4+ hours of Optional Social Activities



Day Of Week	Focused English Skills Classes 9:00-10:50AM	Communication Skills Classes 11:00AM-12:50PM	Optional Classes & Activities 1:30PM-3:20PM
MONDAY	Listening & Speaking OR Writing & Grammar	Integrated Communication Skills	Choose between: - Conversation Group - Tutoring
TUESDAY	Reading, Vocabulary, & Pronunciation	Grammar for Communication	Choose between: - Conversation Group - Tutoring
WEDNESDAY	Listening & Speaking OR Writing & Grammar	Integrated Communication Skills	Choose between: - Conversation Group - Tutoring
THURSDAY	Reading, Vocabulary, & Pronunciation	Grammar for Communication	Choose between: - Conversation Group - Tutoring
FRIDAY	Listening & Speaking OR Writing & Grammar	Integrated Communication Skills	Choose between: - Conversation Group - School Social Activity

2 Social Activities each week (the activity and schedule varies each week)

### TUTORING CENTER

**4 days a week**, meet with our PELA teachers to get extra help with difficult grammar or homework.



### CONVERSATION GROUPS

**5 days a week**, join our conversation groups! Talk with Americans about topics you are interested in, and practice your English.







# PORTLAND ENGLISH LANGUAGE ACADEMY

[www.PortlandEnglish.edu](http://www.PortlandEnglish.edu)

2007 Lloyd Center  
Portland, Oregon 97232 U.S.A.

[apply@PortlandEnglish.edu](mailto:apply@PortlandEnglish.edu)  
503-226-1656

Accredited by

